

# Roskam Parts

Version 2013 Volume 2

## AIR STAMPING INC.

www.airstamping.com  
217-342-1283 phone



**AS-100-04-017**  
Idler Sprocket



**AS-100-04-019-ASY**  
Sprocket



**AS-100-04-35**  
Support Plate



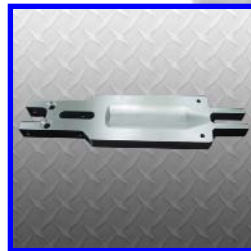
**AS-100-04-36**  
Support Plate



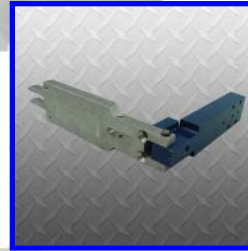
**AS-100-4-017**  
Sprocket



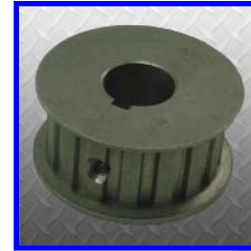
**AS-100-8-79**  
Pusher Tip Assembly



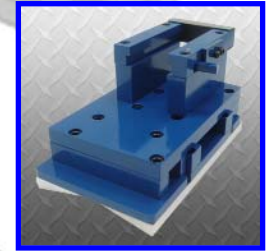
**AS-101-05-181**  
Main Block



**AS-101-05-181-SUB**  
Front Stop Sub



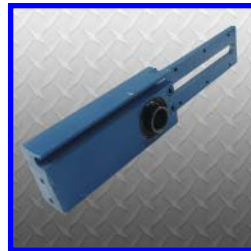
**AS-102-5-52**  
Gear Belt Pulley



**AS-105-12-070-ASSY**  
Narrow Stack Compressor  
Head



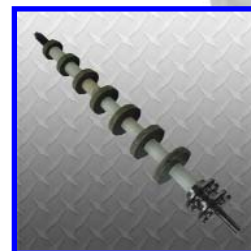
**AS-111**  
Roskam Bushing



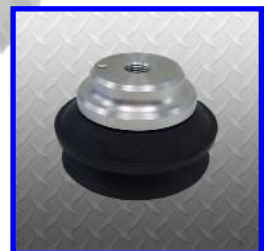
**AS-119BC-05-036-OP**  
Top Belt Arm



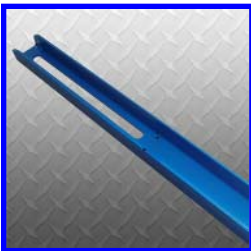
**AS-300-05015-PDT-ASY**  
Sprocket Assembly



**AS-303-23-3-11**  
Power Disc Turn



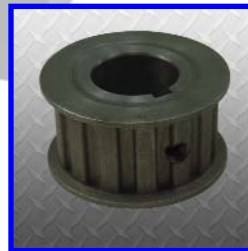
**AS-31.50.029B75**  
Suction Cup



**AS-5300-54-1**  
Channel Fork



**AS-7085-93-13**  
Robot Finger Guide



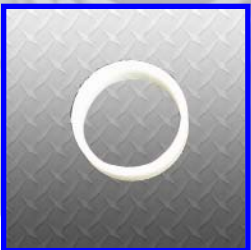
**AS-7219-48-098**  
Timing Pulley



**AS-A115-8-19**  
Adjusting Screw



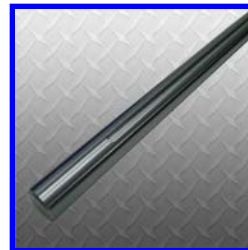
**AS-A5300-54-161**  
Spacer Plate



**AS-A5300-54-163**  
Nylon Roller



**AS-ACPI-16-2.00C-2.6**  
Crowned Idler Roller



**AS-ADS16-22.5-05**  
Shaft



**AS-AFPD-16-2.00F3.00**  
Flanged Drive Pulley



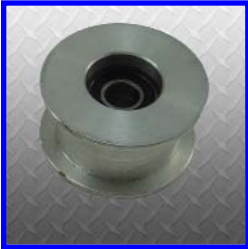
**AS-AFPI04-1BF00.8730**  
Flanged Idler Pulley

# Roskam Parts

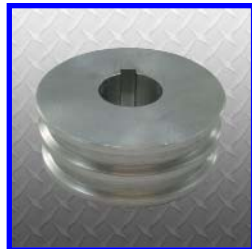
Version 2013 Volume 2

## AIR STAMPING INC.

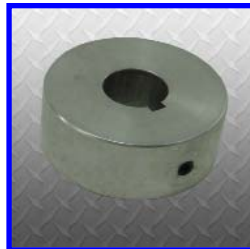
www.airstamping.com  
217-342-1283 phone



**AS-AFPI-08-1.0F2.50**  
Flat Pulley



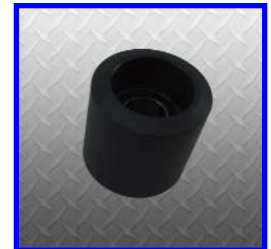
**AS-AGPI-10-1.0-F2.25**  
Outfeed Pulley



**AS-CPD16-1.00-C2.880**  
Crowned Pulley



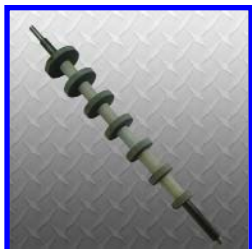
**AS-CPI-16-2.00-C-2.6**  
Crowned Idler Roller



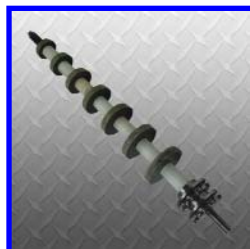
**AS-CPI16-6.0SC2.970**  
Idler Pulley



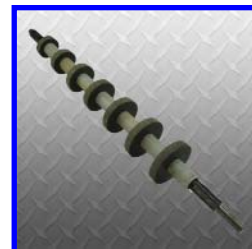
**AS-D300-23-035-11**  
Power Disc Turn



**AS-D303-23-3-11-NS**  
Power Disc Turn



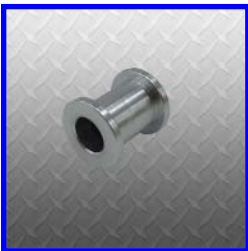
**AS-D303-23-3-12**  
Power Disc Turn



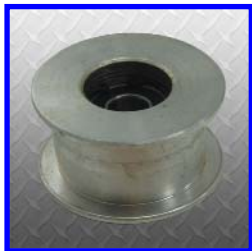
**AS-D303-23-3-12-NS**  
Power Disc Turn



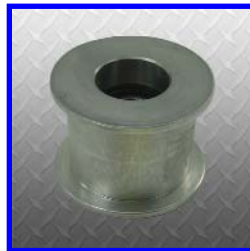
**AS-FPD24-2.00-F4.0KN**  
Flanged Idler Pulley



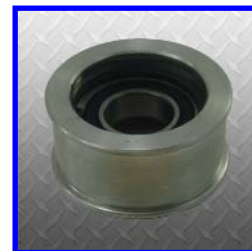
**AS-FPI04-1.00-F0.873**  
Flanged Idler Pulley



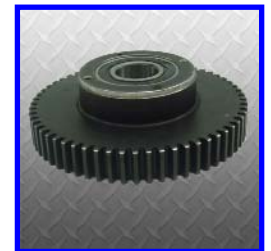
**AS-FPI08-1.00-F2.500**  
Flanged Idler Pulley



**AS-FPI-1.25-F2.500**  
Flanged Idler Pulley



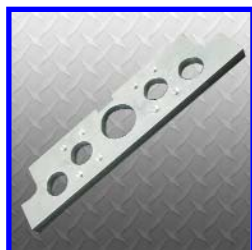
**AS-FPI16-1.00F2.75**  
Flanged Idler Pulley



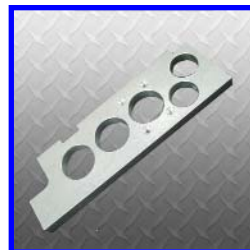
**AS-MRAMGEA100-4-19**  
Stacker Gear



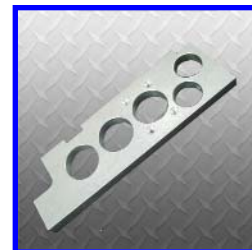
**AS-MRAMGEARCR-101**  
Gear Set



**AS-PLATE1**  
Aluminum Plate



**AS-PLATE2**  
Aluminum Plate



**AS-PLATE3**  
Aluminum Plate

### REVERSE ENGINEERING

ASI is committed to the continued growth in press & bindery parts. Items that are too expensive, are hard to find, have long lead time, or need improving; the ASI Team welcomes the opportunity to assist with your parts needs.