

# M-300M Press Parts

Version 2013 Volume 1

## AIR STAMPING INC.

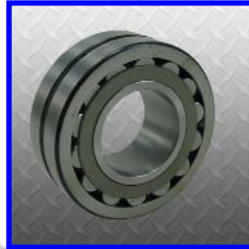
www.airstamping.com  
217-342-1283 phone



**AS-080325**  
Ratchet



**AS-304828**  
Stud Bracket



**AS-380881**  
Blanket Cylinder  
Bearing



**AS-382955-AY**  
Water Brush Roll  
Assembly



**AS-388344**  
Plate Cylinder Bearing



**AS-459041**  
Brake Stud



**AS-460843**  
Ink Fountain Brake



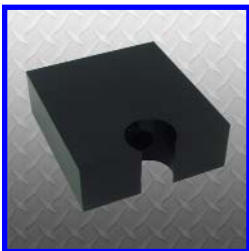
**AS-460843-1AY**  
Ink Fountain Brake  
Assembly



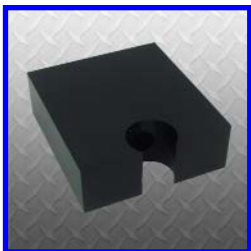
**AS-460843-AY**  
Ink Fountain Brake  
Assembly



**AS-460844**  
Brake Turnbuckle



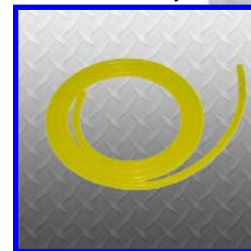
**AS-471609**  
Ink Blade Block



**AS-471609-Q**  
Modified Ink Blade Block



**AS-471611**  
Thrust Bearing



**AS-473867**  
Ink Fountain Top Plate  
Seal



**AS-480151**  
Blanket Cylinder Bearer



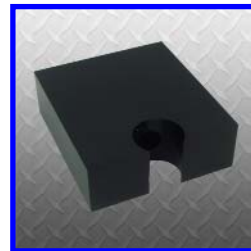
**AS-480151-1**  
Blanket Cylinder Bearer



**AS-480153**  
Plate Cylinder Bearer



**AS-480153-1**  
Plate Cylinder Bearer



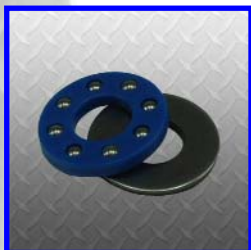
**AS-480411**  
Ink Blade Block



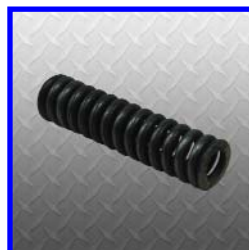
**AS-480412**  
Actuator Stem



**AS-480413**  
Adjusting Nut



**AS-480903**  
Thrust Bearing



**AS-480904**  
Actuator Spring

### REVERSE ENGINEERING

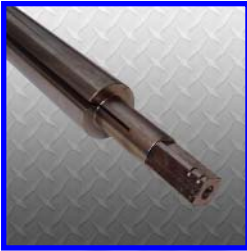
ASI is committed to the continued growth in press & bindery parts. Items that are too expensive, are hard to find, have long lead time, or need improving; the ASI Team welcomes the opportunity to assist with your parts needs.

# M-300M Press Parts

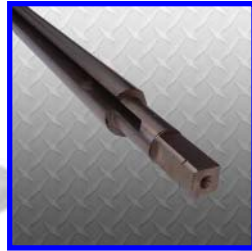
Version 2013 Volume 1

## AIR STAMPING INC.

www.airstamping.com  
217-342-1283 phone



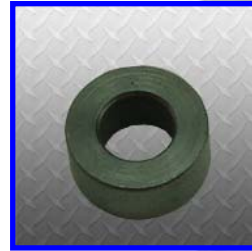
**AS-480950**  
Plate Reel Rod



**AS-480961**  
Blanket Reel Rod



**AS-480961-1**  
Blanket Reel Rod



**AS-480964**  
Spring Spacer



**AS-480965**  
Top Plate Seal



**AS-481018**  
Ink Fountain Brake



**AS-481018-1AY**  
Ink Fountain Brake  
Assembly



**AS-481018-AY**  
Ink Fountain Brake  
Assembly



**AS-481019**  
Brake Turnbuckle



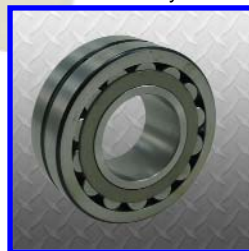
**AS-481020**  
Brake Stud



**AS-481021**  
Brake Spring



**AS-481028**  
Bearing



**AS-481029**  
Bearing



**AS-481204**  
Blanket Cylinder  
Spacer



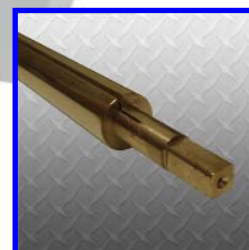
**AS-481237**  
Telecolor Actuator  
Rebuilt



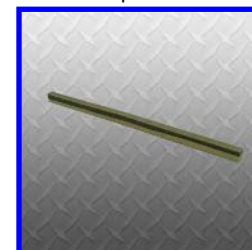
**AS-387**  
DC Telecolor Manual  
Adjustment Tool



**AS-481983**  
Blanket Reel Rod



**AS-513030**  
Plate Reel Rod



**AS-515139**  
Ink Fountain Felt



**AS-515217**  
Ratchet Assembly



**AS-5339301**  
Ink Fountain Actuator  
Spring



**AS-PRWS15T**  
Water Stop



**AS-Z20045**  
Plate Cylinder Spacer



**AS-700362**  
Bustle Wheel



**AS-700360-AY**  
Bustle Wheel  
round or  
square  
mounting  
hole  
adjust-  
ment  
wheel