

Mosca Parts

Version 2013 Volume 1

AIR STAMPING INC.

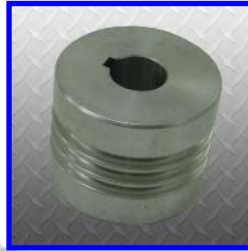
www.airstamping.com
217-342-1283 phone



AS-0401-0140-22
Gear



AS-0401-030000-07
Shaft



AS-1015-1420-10
Center Roller



AS-1050-0768
Kicker Arm



AS-2101-1900-10
Timing Pulley



AS-2801-0110-14
Timing Belt Pulley



AS-2801-0111-00
Strap Guide Assembly



AS-2801-0121-01
Cam



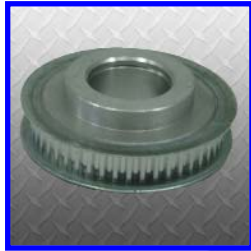
AS-2801-0121-03
Oscillator Cam



AS-2801-0121-05
Cam



AS-2801-0121-06
Pivot Arm Cam



AS-2801-0121-10
Timing Belt Pulley



AS-2801-0125-00
Clamp Pusher



AS-2801-0131-04
Tension Shaft



AS-2801-0134-03
Sprocket



AS-2801-0135-22
Timing Pulley



AS-2809-011100-04
Timing Pulley



AS-2809-012100-04
Strap Stop Cam



AS-2809-012100-10
Timing Pulley



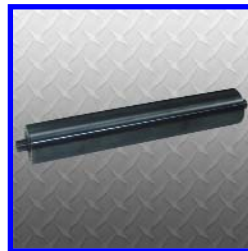
AS-2809-013100-04
Tension Shaft



AS-2809-013510-00
Timing Pulley V-Belt



AS-2901-011201-00
Spring Lever



AS-2901-150200-00
End Roller



AS-2902-010101-04
Cam



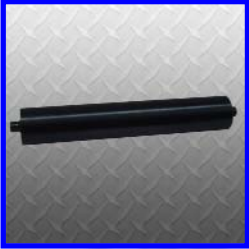
AS-2902-080301-00
Pivot Block Track

Mosca Parts

Version 2013 Volume 1

AIR STAMPING INC.

www.airstamping.com
217-342-1283 phone



AS-2920-150200-00
Crowned Roller
Assembly



AS-2925-270230-00
Timing Pulley



AS-ME1704A02
Armature



AS-ME1754E03
Armature

REVERSE ENGINEERING

ASI is committed to the continued growth in press & bindery parts. Items that are too expensive, are hard to find, have long lead time, or need improving; the ASI Team welcomes the opportunity to assist with your parts needs.

